

These questions are due by the end of the week. 10/10 points towards your assessment grade if you get them all right and have the math work on paper to back up your work.

You will receive zero points and fail the assignment if you are asked for your work on paper and can not produce that effort. Missing some part of the assignment will cause a loss of that percent of the overall assignment.

These weekly problems cannot be attempted a second time and the work must be turned in on time, not later in the day, not during remediation, and not the next day.

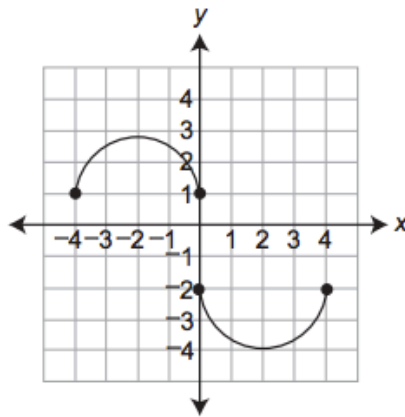
You should work on these problems throughout the week and use down time in class to work with your teams on the solution to these problems.

1.

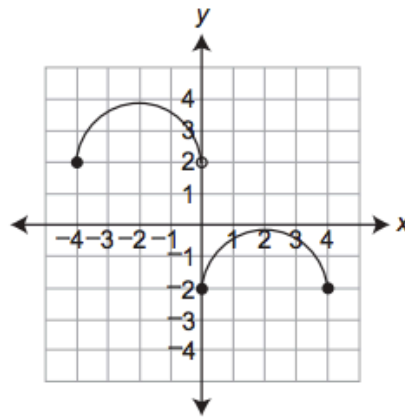
Standard A1.2.1.1.2

Which graph shows y as a function of x ?

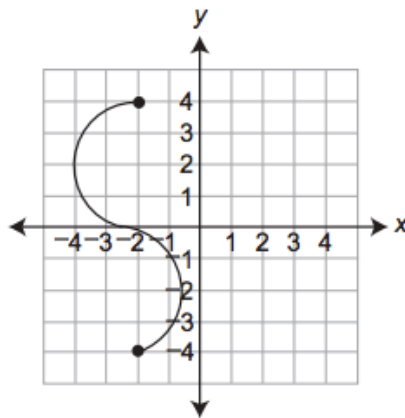
A.



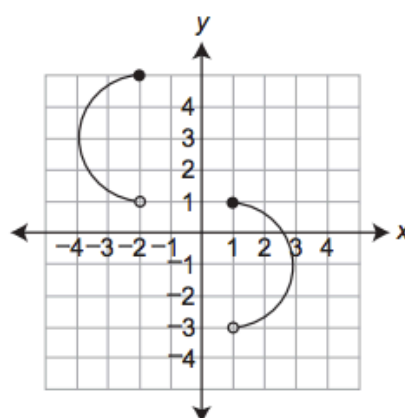
B.



C.



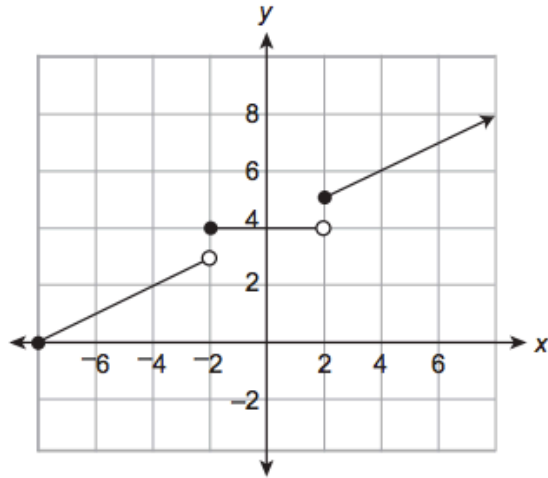
D.



2.

Standard A1.2.1.1.3

The graph of a function is shown below.



Which value is **not** in the range of the function?

- A. 0
- B. 3
- C. 4
- D. 5

3. Explain how/why the vertical line test works to identify non-functions below.